

Set-up Guide



Protect anything, anywhere, anytime.™





ALARM SYSTEM IN A BOX

1.2 watt Cellemetry radio

PIR motion

senses heat and motion up to 35' away

115 db Siren

like a police siren

Safety strobe light

directs authorities to location and indicates alarm event

Lighted keypad

arm/disarm

AUTOMATIC SAFETY FEATURES

Instant wireless transmission

safest alarm signal - .6 seconds fast

Rattlesnake tamper sensor

instantly trips alarm when attacked - only when alarm is armed

10 hour battery back-up

works when the power is off calls when the battery is low

tattletale dispatch

24/7 nationwide wireless monitoring

STATUS LIGHTS

tattletale

FLASHING = ALARM SENT

ON = ALARM RECEIVED

power

ON = POWER OK

FLASHING = BATTERY LOW

OFF = NO AC POWER

armed

ON = ALARM IS ARMED

FLASHING = NO DELAY

ready

ON = READY TO ARM

OFF = ACCESSORY IS TRIPPED

CHECK ZONE LIGHTS

cell

OFF = NO CELL SIGNAL

FLASHING = ADEQUATE CELL

SIGNAL

ON = FULL CELL SIGNAL

ZONE LIGHTS

Every sensor on your tattletale alarm system is represented by a zone light. Zone lights tell the status of the individual sensors. **NOTE: Zone 3 always represents the on-board motion detector.**

RAPID FLASHING = OUT OF RANGE OR

LOW BATTERY IN SENSOR

SLOW FLASH = SENSOR IS BEING TRIPPED OR

SENSOR IS OPEN OR

SENSOR IS MISSING/OUT OF RANGE

SOLID LIGHT = ZONE IS BYPASSED

OFF = NO ACTIVITY OR ALL SENSORS CLOSED

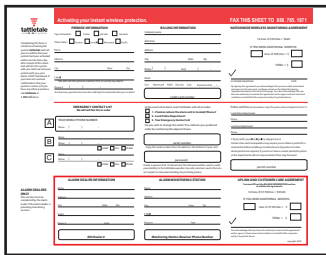


**IMPORTANT: NO CELL SERVICE MEANS NO PROTECTION!
CHECK THE "CELL" LIGHT EVERY TIME YOU ARM THE UNIT.**

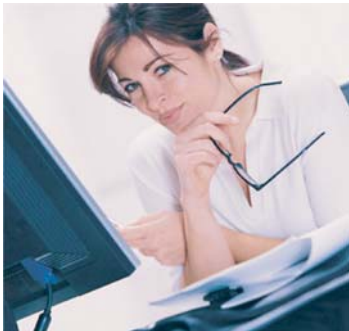
1

Fill out the activation sheet

Fax it to us as 1.888.765.1671. tattletale will call you to confirm that your monitoring has been activated.



Connect anywhere to 24/7 nationwide wireless monitoring



TO ENSURE PROPER PROTECTION THE ALARM SYSTEM MUST BE REGISTERED WITH THE MONITORING COMPANY.

2

Plug it in

A. Locate the unit in an area that an intruder is likely to pass through.

B. Place the tattletale on a STABLE, HORIZONTAL surface.

C. Angle the unit so that the intruder will CROSS IN FRONT OF THE MOTION DETECTOR.



The internal motion detector has a range of 50 feet and sees at a 90° angle.

For easy arming and disarming choose a location that will be easily accessible to you when you enter and exit. Make sure there is an electrical outlet nearby. Plug it in.

This will activate the "power" indicator lights (on the front and top of the unit). Wait 60 seconds for a "beep" indicating the unit is warmed up and ready to proceed.

FOR OPTIMUM PERFORMANCE WE RECOMMEND THE USE OF A SURGE PROTECTOR FOR EACH ALARM UNIT.

3

Test your protection

Check the "cell" light on top of the tattletale. If the light is:

OFF = NO SERVICE
FLASHING/ON = CELL SERVICE

Call tattletale at 1.888.TELL.ON.U (835-5668) and indicate that you would like to perform a test.

Press the * and # keys at the same time. This sends an instant alarm to the monitoring station. Watch the "tattletale" light or the "calling" light on the front of your unit. If the tattletale light is:

FLASHING = ALARM SENT
ON = ALARM SIGNAL RECEIVED

The representative on the phone will let you know if the signal was received.

TO ENSURE PROPER PROTECTION REPEAT THIS TEST WEEKLY.

Wireless sensors and accessories

4

Test your protection

You can place up to 16 additional indoor/outdoor sensors up to 2000ft from the tattletale base unit. Each sensor is preprogrammed to work with a specific base unit ONLY.



Indoor wireless sensors

Smoke Detector

Notify the authorities in case of smoke and fire. This smoke detector comes with two 3V Lithium batteries for extended protection.



Glass Break Detector

Protect against break-in. This unit "listens" for the sound of glass breaking within a 25 foot hearing range.



Indoor Motion Detector

Protect any enclosed space. Minimize false alarms with this microprocessor controlled PIR technology.



About zones

Each sensor is assigned to a zone. Each zone can hold up to two sensors. Each of your sensors has a zone location labeled on the back. To help you remember this information, your alarm unit has a sticker on the bottom that labels zone locations.

Door/Window Sensor

Protect any opening. Any unauthorized access sends an instant alarm signal to the Tattletale unit.



High/Low Temperature Sensor

Designed to send an alarm if the ambient temperature drops below 43°F. It will continue to send an alarm until the ambient temperature rises above 43°F.



Designed to send an alarm if the ambient temperature reaches 135°F. It will continue to send an alarm until the temperature drops below 135°F.

Sensors can have their own address

Since your alarm has long range wireless capability you may choose to install sensors at different addresses. In the event of an alarm at one of these addresses you will want the police to respond to the address of the sensor.

Call tattletale at 1.888.tell.on.u and give us the zone number on the back of the sensor and the address.

Outdoor wireless sensors

Rattler

Innovative sensor detects any movement. Locate on building materials, heavy equipment or lumber to detect theft or vandalism.



Dual-Detection Motion Detector

Prevents false alarms caused by birds and animals. Two discreet detection areas must be tripped to trigger alarm.



No Power?

Get AMPS package. Includes AC/DC inverter, battery charger (requires marine battery).



Zone lights

Zone lights are located on the top of the tattletale base unit. The zone lights show the location and status of each sensor.

When the light associated with sensor is:

OFF = OK

FLASHING = ACCESSORY IS TRIPPED OR OPEN

RAPIDLY FLASHING = LOW BATTERY OR OUT OF RANGE



Storage Container Motion Detector

Protect any metal container. Remote transmitter ensures maximum range. Tamperproof.



the LOOP

Tie up anything with the LOOP. This long range sensor works like an electronic bicycle lock. Simply wrap the LOOP cord around the item(s) that you want to protect and a stationary object. When the LOOP cord is unplugged or cut an instant wireless signal is sent to the Tattletale alarm unit. The LOOP is rugged, weatherproof and easy to use indoors or outdoors.



Using your alarm

5

Create your master code

Choose a four digit master code to use to arm and disarm your tattletale.

The tattletale comes from the factory with a preprogrammed master code of 1-2-3-4

To create your new code:

PRESS * 1 #
PRESS 1 2 3 4
PRESS * 1 #
ENTER YOUR NEW YOUR DIGIT
MASTER CODE



PRESS * 1 # TO EXIT

Test the new master code by arming the system with the new master code.

6

Arm your alarm

ENTER YOUR MASTER CODE
OR
PRESS THE "ON" BUTTON ON
YOUR KEY CHAIN REMOTE

The "armed light will now be on.

Key chain
remote control
One button on/off
plus panic



7

Disarm your alarm

You will have 40 seconds to enter your code after you hear a warning tone.

ENTER YOUR MASTER CODE
OR
PRESS THE "OFF" BUTTON ON
YOUR KEY CHAIN REMOTE

8

When you have an alarm

The siren will sound for 8 minutes unless your code is entered.

The strobe light will flash until your code is entered (this is a safety feature so that you do not enter a dangerous area).

The "tattletale" calling light flashes when sending the instant signal to tattletale dispatch. tattletale dispatch will page your alarm back after the signal is received (usually about 60 seconds).

Dispatch will call your "primary contact" number to ask for your password. If the operator cannot reach you or the person that answers the phone gives the wrong password the police or fire department will be called. Your "additional contacts" will be called and asked to meet the police or fire personnel.

IF THE ALARM IS A MISTAKE YOU CAN CALL tattletale DISPATCH AND CANCEL: 1-888-tell-on-u

9

Add up to 6 additional user codes

Have the user create a 4 digit code that can be easily remembered.

Assign an ID number for that user code from 2-7.
(EX. to add user code #2)

PRESS * 2 #
ENTER THE MASTER CODE
PRESS * 2 # (AGAIN)
ENTER THE USER 2 CODE
PRESS * 2 # (AGAIN)

Test the code by arming the system with the new code.

Remember: record each user ID#, user code, and user's name, in a safe place away from your tattletale.

To delete a user code:
(EX. delete user code 2)

PRESS * 2 #
ENTER YOUR MASTER CODE
PRESS * 2 # (AGAIN)
ENTER YOUR MASTER CODE
PRESS * 2 # (AGAIN)

Wireless remote
siren/strobe
Project your alarm
outside



Troubleshooting

Alarm beeps when you try to arm it

A. SLOW FLASH ZONE LIGHT

-Sensor being tripped-

Check the remote sensor(s) that are assigned to that zone. Make sure that all Loops are locked, door/window sensors are lined up with the magnet, and motion detectors are not seeing any motion.

Bypass the zone and arm your alarm

(for example zone 2)

PRESS * 2 *

ENTER YOUR MASTER CODE TO OVERRIDE THE ZONE

B. RAPID FLASH ZONE LIGHT

-Sensor is out of range-

Your tattletale is not seeing it. Bring the sensor close to your alarm and see if it stops flashing. or

-Dead Battery-

All sensors use 3.0 V Lithium # CR123A (except the key chain remote which uses a #CR2) or

-Sensor is missing-

ENTER YOUR MASTER CODE TWICE TO OVERRIDE THE ZONE

C. NO POWER LIGHT

-Your alarm is on battery back-up power-

Check the power plug on the rear of the tattletale. Check the wall transformer. If the AC outlet has a push button fuse, it may be tripped. Try pressing the button on the outlet. Move your alarm to an outlet with power and try it there. If unsuccessful call tattletale service.

ENTER YOUR MASTER CODE TWICE TO OVERRIDE

IN ANY OF THE ABOVE CASES CALL 1.888.TELL.ON.U TO RESOLVE THE PROBLEM DURING THE NEXT BUSINESS DAY.

Your alarm goes off before you can enter your code

During the 40-second entry delay, the RattleSnake™ vibration sensor inside the tattletale is active. The vibration sensor is tripping the alarm. To solve this problem, place a piece of foam or a folded towel under the tattletale to absorb some of the vibrations when you enter the area.

You may be tripping a sensor that is programmed for instant alarm. To avoid instant alarm, you can reprogram the sensor for delay entry.

When you move

Unplug your tattletale, take it to your new location, and plug it in. Call 1.888.TELL.ON.U for a change of address form.

-Address changes must be received IN WRITING and can take up to 24 hours to process-

Zone light for an indoor motion detector will not flash

To preserve battery life, so your batteries last 3-5 years, the motion detector will go into a sleep mode for 3 minutes after it sees motion. It will “wake up” only after it has had a period of 3 minutes of seeing nothing.

To test the wireless motion detector, place it in a drawer or somewhere where it will not see any movement for at least 3 minutes. After 3 minutes, take the motion detector out of the drawer and watch the corresponding zone light on the tattletale as you wave your hand in front of it. If the zone light flashes everything is operating properly. If the light does not flash call 1.888.tell.on.u.

Less than 2000' range?

Wireless sensors will generally work up to 2000 feet away from the tattletale in an open field. Certain objects-between the sensor and the tattletale can decrease the range. To increase the range of sensors use a Signal Booster to create an extended wireless network.

Changing a battery in an accessory.

PRESS THE RESET BUTTON (reset button locations vary-see enclosed instruction sheet(s) Battery changes in all sensors require pressing the reset button.

Accessory not working in a metal storage container

The metal of the container is stopping the signal. Use a Storage Container Motion Detector to ensure optimal performance.